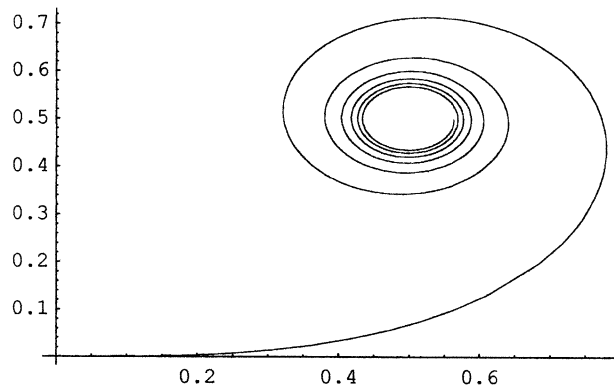
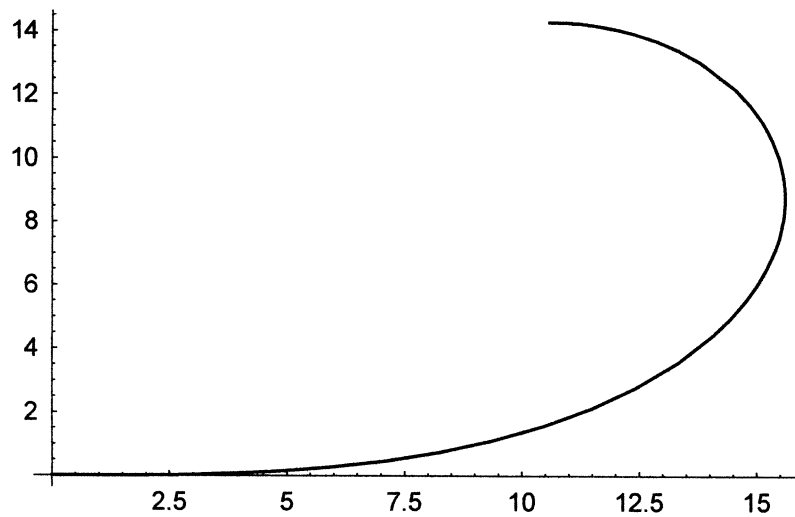


```
In[45]:= x1 = ParametricPlot[{FresnelC[t], FresnelS[t]}, {t, 0, 5}]
```



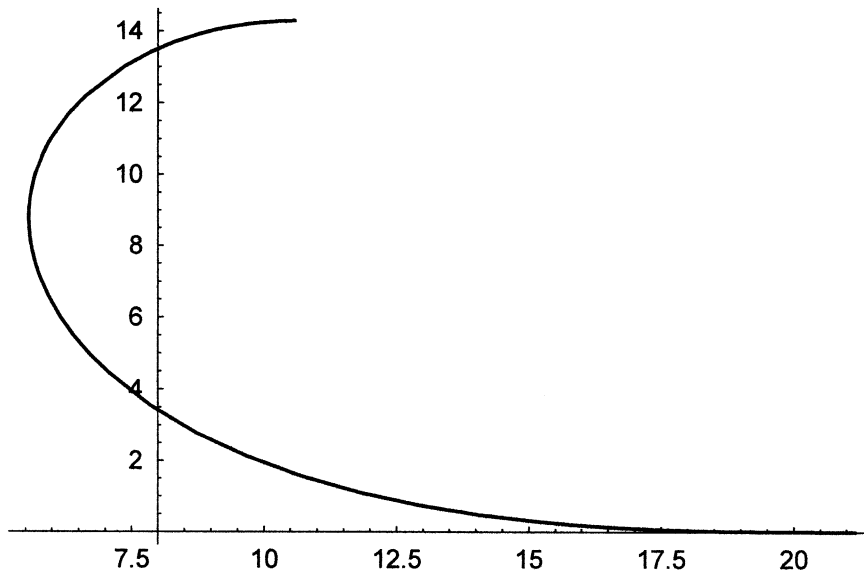
```
Out[45]= - Graphics -
```

```
In[56]:= x2 = ParametricPlot[{20 * FresnelC[t], 20 * FresnelS[t]}, {t, 0, Sqrt[2]},  
PlotStyle -> {Thickness[0.004]}, DefaultFont -> {"Arial", 12}]
```



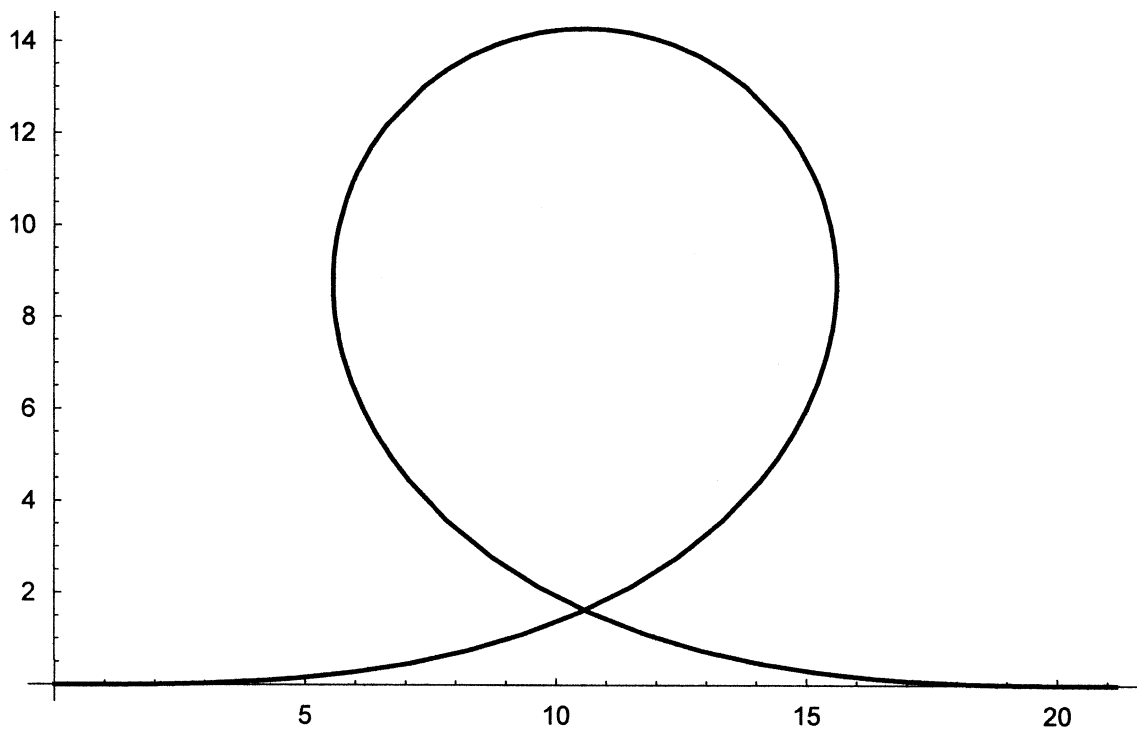
```
Out[56]= - Graphics -
```

```
In[57]:= x3 =  
  ParametricPlot[{20 * FresnelC[-t] + 2 * 20 * FresnelC[Sqrt[2]], -(20 * FresnelS[-t])},  
    {t, 0, Sqrt[2]}, PlotStyle -> {Thickness[0.004]}, DefaultFont -> {"Arial", 12}]
```



```
Out[57]= - Graphics -
```

```
In[58]:= Show[x2, x3]
```



```
Out[58]= - Graphics -
```